

**Blast Chiller Freezers Crosswise
Blast Chiller-Freezer Crosswise -
100 kg 20GN 1/1 (R452A)**

ITEM # _____

MODEL # _____

NAME # _____

SIS # _____

AIA # _____

**110926 (ZCBCFA100SE)**Blast chiller & freezer
crosswise 100kg, compatible
with 20x1/1GN convection
oven crosswise - R452A**Short Form Specification****Item No.** _____

Blast chiller/freezer with digital temperature and time display. For 20 GN 1/1 or 600x400 mm trays (h = 65 mm). Load capacity: chilling 100 kg; freezing 65 kg. Automatic detection of food probe insertion. Automatic and Manual defrost. Blast chilling real remaining time estimation (A.R.T.E.). Turbo cooling function. Thawing function. HACCP and Service alarms with data logging. Connectivity ready. Operating air temperature: +10/-36°C. Single sensor food probe. Main components in 304 AISI stainless steel. Internal rounded corners and drain. Evaporator with antirust protection. Performances guaranteed at ambient temperature of +40°C. Cyclopentane insulation (HCFC, CFC and HFC free). R452a refrigerant gas (HCFC and CFC free). Built-in refrigeration unit.

Main Features

- Blast Chilling cycle: 100 kg from 90°C up to 3°C in less than 90 minutes.
- Chilling cycle with automatic preset cycles:
 - Soft Chilling (air temperature 0°C), ideal for delicate food and small portions.
 - Hard Chilling (air temperature -12°C), ideal for solid food and whole pieces.
- Freezing cycle with automatic preset cycles (air temperature -36°C), ideal for all kind of food (raw, half or fully cooked).
- Turbo cooling: chiller works continuously at the desired temperature; ideal for continuous production.
- Thawing cycle (air temperature 7°C), ideal for defrosting food in a controlled and safe environment.
- Possibility to modify the cavity temperature in turbo cooling and thawing cycles.
- Remaining time estimation for probe-driven cycles based on artificial intelligence techniques (ARTE) for an easier planning of the activities.
- Single sensor core probe as standard.
- Control unit provides two large displays to read out: time, core temperature, cycle countdown, alarms, service information.
- On-board HACCP monitoring capable.
- Connectivity ready for real time access to connected appliances from remote and HACCP monitoring (requires optional accessory).
- Performance guaranteed at ambient temperatures of +40°C (Climatic class 5).
- Automatic and manual defrosting.
- Working temperature from +90°C to +3°C in chilling mode or to -36°C in freezing mode.

Construction

- No water connections required.
- Ventilator swinging hinged panel for access to the evaporator for cleaning.
- Waste water can be plumbed into drain, but can also be collected in an optional waste container.
- Environmentally friendly: R452a as refrigerant gas.
- Built-in refrigeration unit.
- Removable magnetic door gasket with hygienic design.
- Main components in 304 AISI stainless steel.
- Evaporator with antirust protection.
- Hygienic shape with rounded corners (and drain for easy cleaning).
- Automatic heated door frame.
- Door reversible on site.
- Door stopper to keep the door open in order to avoid the formation of bad smells (kit available to be mounted on site, depending on preferred door hinge).
- 20 levels available. Usable with 20 x GN 1/1 or 600x400 mm trays (h = 65 mm).
- IP21 protection index.

Sustainability

- Holding at +3 °C for chilling or -20 °C for freezing, automatically activated at the end of each cycle, to save energy and maintain the target temperature (manual

APPROVAL: _____



Blast Chiller Freezers Crosswise Blast Chiller-Freezer Crosswise - 100 kg 20GN 1/1 (R452A)

activation is also possible).

- High density polyurethane insulation, 60 mm thickness, HCFC free.

**Blast Chiller Freezers Crosswise
Blast Chiller-Freezer Crosswise - 100 kg 20GN 1/1 (R452A)**

The company reserves the right to make modifications to the products without prior notice. All information correct at time of printing.

2024.05.19

Included Accessories

- 1 of 1 single-sensor probe for blast chiller/ freezers PNC 880213

Optional Accessories

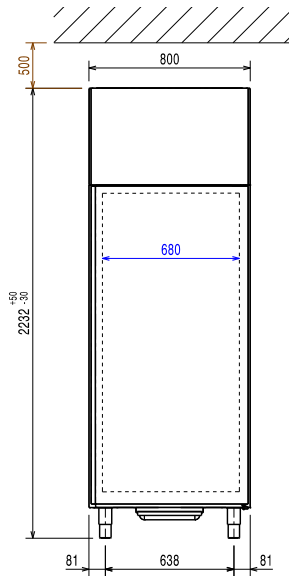
- | | | |
|---|------------|--------------------------|
| • 1 single-sensor probe for blast chiller/ freezers | PNC 880213 | <input type="checkbox"/> |
| • Rack rails for vertical blast chiller and chiller/freezer | PNC 881182 | <input type="checkbox"/> |
| • Kit 4 wheels for blast chiller/freezers crosswise 100 kg | PNC 881297 | <input type="checkbox"/> |
| • Roll-in rack support for 40 kg blast chiller/ freezers GN 1/1 | PNC 881518 | <input type="checkbox"/> |
| • Pair of AISI 304 stainless steel grids, GN 1/1 | PNC 921101 | <input type="checkbox"/> |
| • Pair of AISI 304 stainless steel grids, GN 1/1 | PNC 922017 | <input type="checkbox"/> |
| • AISI 304 stainless steel grid, GN 1/1 | PNC 922062 | <input type="checkbox"/> |
| • Trolley for 20 1/1 GN roll-in rack | PNC 922132 | <input type="checkbox"/> |
| • Base for 20 1/1 GN roll-in rack | PNC 922141 | <input type="checkbox"/> |
| • 60-mm pitch roll-in rack for 20 1/1 GN | PNC 922203 | <input type="checkbox"/> |
| • 80-mm pitch roll-in rack for 20 1/1 GN | PNC 922205 | <input type="checkbox"/> |
| • AISI 304 stainless steel bakery/pastry grid 400x600mm | PNC 922264 | <input type="checkbox"/> |
| • IoT module for blast chiller/freezers crosswise | PNC 922419 | <input type="checkbox"/> |

Blast Chiller Freezers Crosswise

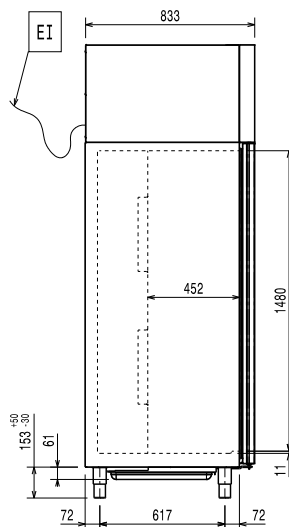
Blast Chiller-Freezer Crosswise

- 100 kg 20GN 1/1 (R452A)

Front

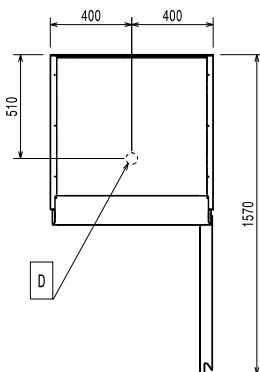


Side



EI = Electrical inlet (power)

Top



Electric

Supply voltage:

110926 (ZCBCFA100SE) 380-415 V/3N ph/50 Hz

Electrical power max.:

4.4 kW

Circuit breaker required

Installation:

Clearance: 5 cm on sides and back.

Please see and follow detailed installation instructions provided with the unit

Capacity:

Trays type: GN 1/1;600x400

Key Information:

External dimensions, Width:	800 mm
External dimensions, Depth:	833 mm
External dimensions, Height:	2232 mm
Net weight:	230 kg
Shipping weight:	268 kg
Shipping volume:	1.83 m ³

Refrigeration Data

Refrigeration power at evaporation temperature: -20 °C

Condenser cooling type: AIR

Test performed in a test room at 30°C to chill/ freeze (+10°C/-18° C) a full load of 40mm deep trays filled with mashed potatoes evenly distributed up to a height of 35 mm at starting temperature between 65° and 80°C within 120/270min.

Product Information (EN17032 – Commission Regulation EU 2015/1095)

Chilling Cycle Time (+65°C to +10° C):	100 min
Full load capacity (chilling):	100 kg
Freezing Cycle Time (+65°C to -18°C):	270 min
Full load capacity (freezing):	65 kg

Sustainability

Refrigerant type:	R452A
GWP Index:	2141
Refrigeration power:	5440 W
Refrigerant weight:	2400 g
Energy consumption, cycle (chilling):	0.0689 kWh/kg
Energy consumption, cycle (freezing):	0.2335 kWh/kg

Blast Chiller Freezers Crosswise
Blast Chiller-Freezer Crosswise - 100 kg 20GN 1/1 (R452A)

The company reserves the right to make modifications to the products without prior notice. All information correct at time of printing.